



Wetlands Institute Solar Energy

The Wetlands Institute has undergone two solar energy projects since 2010.



*Solar Panels of Diller roof
Project #1*

Project #1, completed in 2011, was in cooperation with the Cape May County Vocational Technical High School. Students installed 24 solar panels to the Institute's Diller Deck roof. These 24 compensate for a total of 4% of the Institute's annual power usage, with an annual cost savings of \$1,008, and also generating \$3,055 in SRECs (Solar Renewable Energy Credits) to date, that is split between the Wetlands Institute and the Vocational Technical High School. The project provided green jobs

training for the students.

Project #2 was undertaken in the Spring of 2012. This project is in memory of the Wetlands Institute's Board Member, Samuel Roberts, and is generously funded by his family and supporters of the Roberts Memorial Fund. This project installed 49 additional panels that will generate almost 12 kilowatts of power, and supply an estimated 8.6% of annual electricity for the Wetlands Institute. The project is estimated to reduce CO2 production by more than 29,000 lbs/year (equivalent to planting almost 1,500 trees) and save almost 11,000 gallons of water/year.

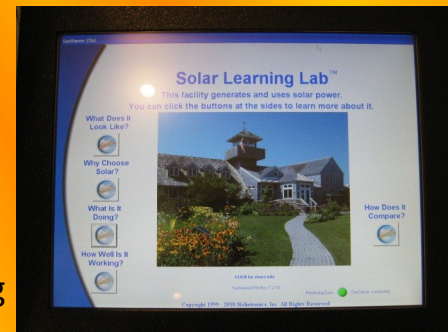


The Wetlands Institute is developing educational material, programs and enhanced displays to promote renewable energy use. At the completion of Project #1, a kiosk was installed to allow visitors to learn about the energy saved each day based on the weather. Moving forward, this kiosk will move to a flat panel display that streams a number of environmental data sets including solar performance, weather, tides and water quality data.



*View of Wetlands Institute from South Side
(Salt Marsh Trail)*

The Wetlands Institute is developing educational material, programs and enhanced displays to promote renewable energy use. At the completion of Project #1, a kiosk was installed to allow visitors to learn about the energy saved each day based on the weather. Moving forward, this kiosk will move to a flat panel display that streams a number of environmental data sets including solar performance, weather, tides and water quality data.



Current Educational Kiosk