

Restoring Shorebird Foraging and Horseshoe Crabs Spawning Habitat to Delaware Bay Beaches: Reeds, Cooks, Kimble's and Pierces Point, NJ

Information for area residents and landowners

Bayshore communities and the surrounding beaches that are critical to spawning horseshoe crabs and migratory shorebirds were both severely impacted by onshore surge and winds associated with the passage of Hurricane Sandy. Sand was transported landward and off the beaches into the surrounding marshes leaving little to no area for horseshoe crab nesting.

Funded by the National Fish and Wildlife Federation, the project partners will restore nearly one mile of beach in segments that include southern Reeds Beach, Cooks Beach, Kimble Beach, and possibly northern Pierces Point. This project is an ecological restoration project with beach design and specifications based on creating suitable habitat for horseshoe crabs.

The project will be carried out by a partnership which includes the American Littoral Society, Middle Township, the Wetlands Institute, LJ Niles Associates, Dianne Daly CEP, New Jersey Department of Environmental Protection, and The Richard Stockton College of NJ Coastal Research Center.

Restoration will involve trucking in nearly 24,000 cubic yards of sand to Kimble Beach, Cooks Beach, and South Reeds Beach. Rubble will be removed from South Reeds Beach (see map for beach areas). If time and funding permits, a segment of beach at northern Pierces Point will have sand added as well.

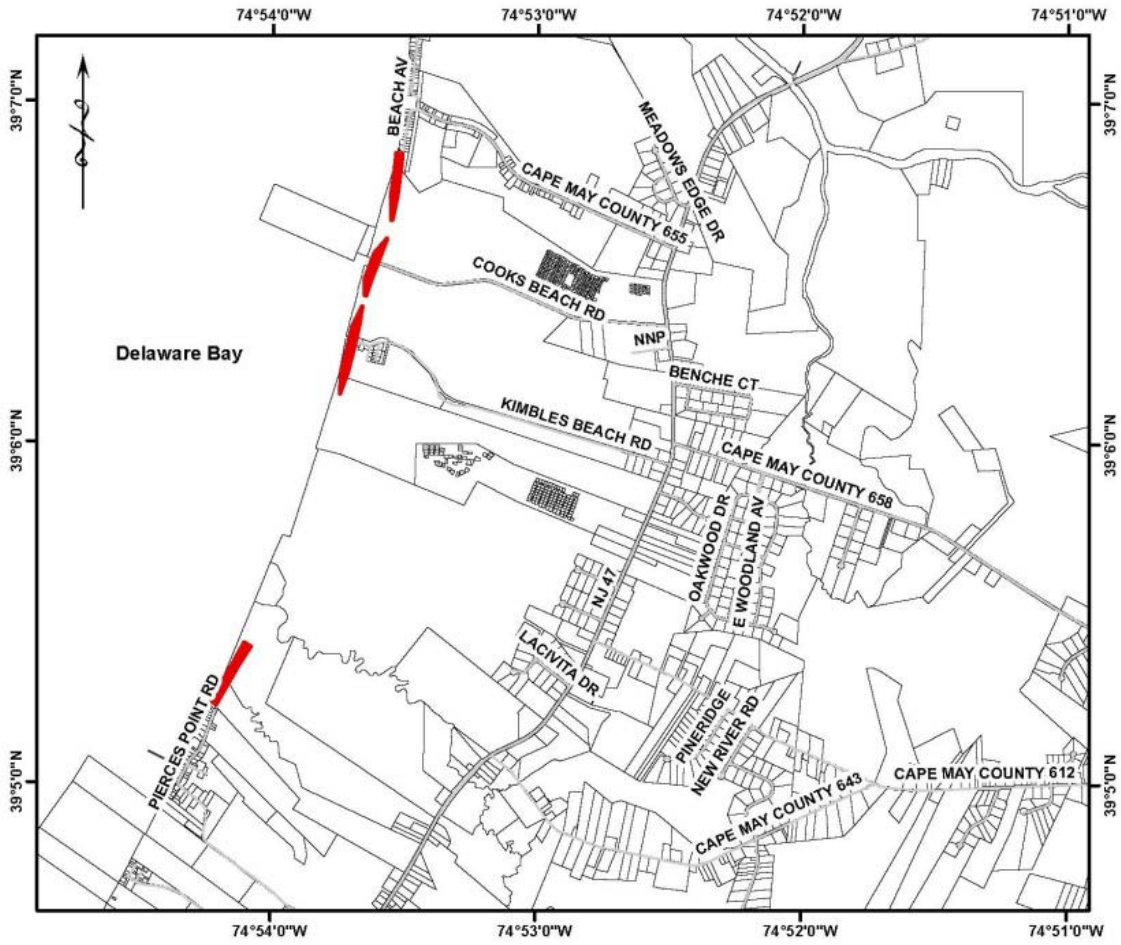
Sand will be trucked to the beaches via local roadways by Albrecht & Heun beginning on Monday March 18th and continuing through the second week of April in advance of the arrival of the horseshoe crabs. Work will start at Kimble Beach, and then move to Cooks Beach, and then South Reeds Beach, though work can be expected at all sites to coincide and overlap. Rubble removal at South Reeds Beach will precede sand emplacement and may begin as early as Monday, March 18th. Rubble removal will be coordinated by Middle Township in partnership with Cape May County Department of Mosquito Control. Concrete rubble will be recycled by Future Mining and Minerals Inc.

Trucks will be working Monday to Friday from 7:00 am – 5:00 pm. Some Saturday work may be required. If you have questions or concerns, please contact Albrecht & Heun at 609-465-5617.

Collaborative efforts are underway between project partners and Middle Township to try to advance additional beach renourishment projects that would help restore additional town beaches. These efforts will take longer to initiate due to permitting and funding requirements.

Local residents and property owners are some of the most dedicated conservationists for this special habitat, so we wanted to make information available about this special local project.

Additional information will be updated at www.wetlandsinstitute.org/conservation as it becomes available.



Areas in red are targeted areas that will receive sand.