

Fly Into Our

NEHST



Nature Education

for

HOMESCHOOL

Students & Teachers

at the



1075 Stone Harbor Boulevard

Stone Harbor, NJ 08247

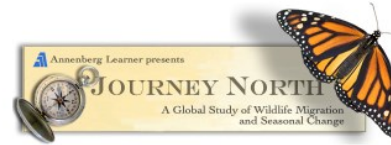
609-368-1211 www.wetlandsinstitute.org

Branching Activities for The Magical World of Butterflies



Check Out This Cool
Citizen Science Website:

[Welcome to Journey North](#)



Track Fall's Journey South!

[News](#) [Search](#) [Site map](#)

- About JN
- Fall 2013
 - American Robins
 - Hummingbirds
 - monarch Butterflies
 - Migratory Class
 - Sunlight & Seasons
 - Symbolic Migration
 - Tule Tree Cardinals
 - Whooping Cranes
 - Gray Whales
 - Here...
- Register
- Report Observations
- Maps
- Kids
- FAQ
- Teachers
- Orientation
- Search



JN App



Captured on Live Cam



Monarch Butterflies



Hummingbirds



Tulip Gardens



Send a Monarch to Mexico!



American Robins



Gray Whales



Whooping Cranes



Sunlight & the Seasons



Track Sunlight to Solve a Mystery



Bald Eagles



Weather and Songbird Migration

Sunlight & Mystery Class

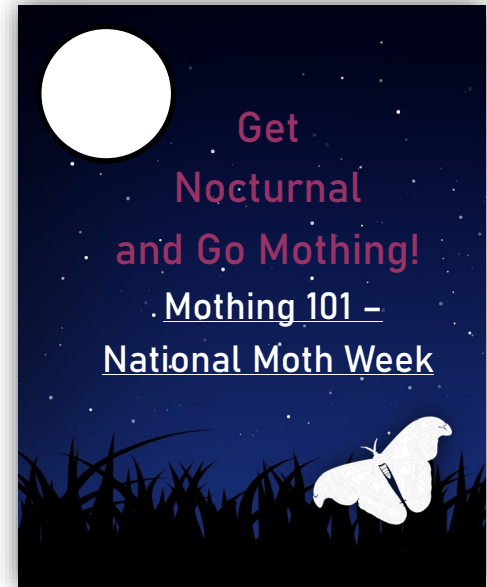
And more!



[View a Live Butterfly Camera](#)

[Live Webcam | Key West Butterfly](#)

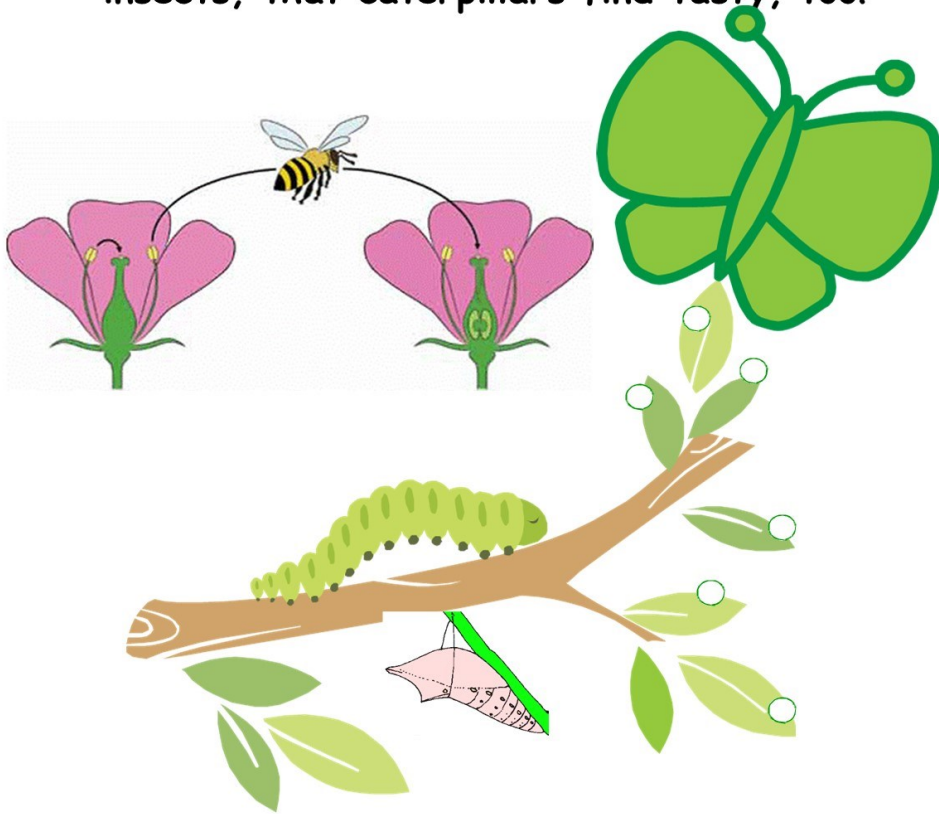
Host a Host Plant
and Pollinator Picnic
Everything you need to get
started is included below!



Get
Nocturnal
and Go Mothing!
Mothing 101 –
[National Moth Week](#)

Host a Host Plant & Pollinator Picnic

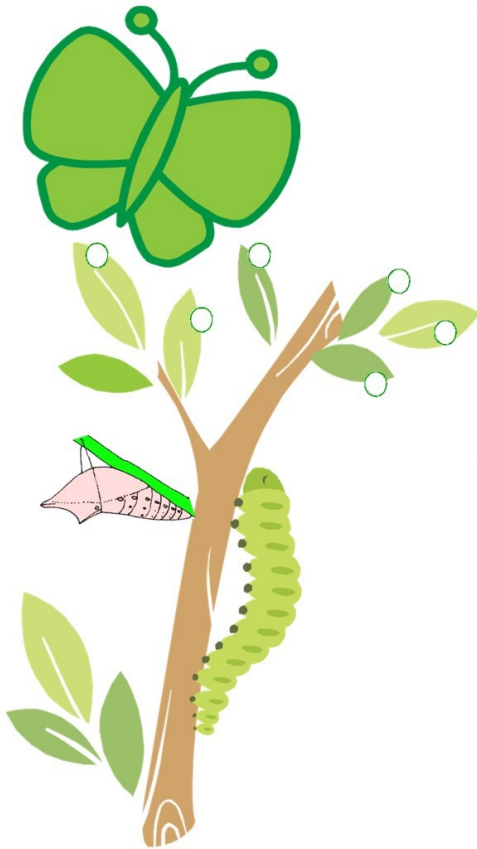
With tasty foods pollinated by bats, birds, and insects, that caterpillars find tasty, too!



- AGAVE:** bats
- ALFALFA:** leafcutter bees and honey bees
- ALMOND:** honey bees
- ANISE:** honey bee
- APPLE:** honey bees, blue mason orchard bees
- APRICOT:** bees
- AVOCADO:** bees, flies, bats
- BANANA:** birds, fruit bats
- BLUEBERRY:** Over 115 kinds of bees, including bumblebees, mason bees, mining bees and leafcutter bees
- CACAO (cocoa):** bats
- CARDAMOM:** honey bees, solitary bees
- CASHEW:** bees, moths, fruit bats
- CHERRY:** honey bees, Bumblebees, Solitary bees, flies
- CHOCOLATE:** midges (flies), stingless bees
- COCONUT:** insects and fruit bats
- COFFEE:** stingless bees, other bees or flies
- CORIANDER:** honey bees, solitary bees
- CRANBERRY:** Over 40 native bees, including bumble
- DAIRY PRODUCTS:** Dairy cows eat ALFALFA pollinated by leafcutter and honey bees
- DATES:** bats
- FIG:** 800 kinds of fig wasps, bats
- GRAPE:** bees
- GRAPEFRUIT:** bees
- GUAVA:** bats
- KIWIFRUIT:** honey bees, bumblebees, solitary bees
- MACADAMIA NUT:** bees, beetles, wasps
- MANGO:** bees, flies, wasps, bats
- MELON:** bees
- NUTMEG:** honey bees, bird
- PAPAYA:** moths, birds, bees
- PEACH:** bees, bats
- PEAR:** honey bees, flies, mason bees
- PEPPERMINT:** flies, bees
- PUMPKIN:** squash and gourd bees, bumblebees
- RASPBERRY and BLACKBERRY:** honey bees, bumblebees, solitary bees, hover flies
- SESAME:** bees, flies, wasps
- STRAWBERRY:** bees
- SUGARCANE:** bees, thrips
- TEA PLANTS:** flies, bees and other insects
- TOMATO:** bumble bees
- VANILLA:** bees

Host plants are the only plants on which butterflies and moths will lay their eggs. Host plants are the only foods their caterpillars will eat. If a butterfly or moth cannot find their host plant, they will not lay their eggs.

How many of these butterfly and moth host plants do you like to eat, too?



Host Plant	Butterfly or Moth
<input type="checkbox"/> Birch (soda)	Mourning Cloak
<input type="checkbox"/> blueberries	Spring Azure
<input type="checkbox"/> broccoli	Cabbage White
<input type="checkbox"/> cabbage	Cabbage White
<input type="checkbox"/> carrot	Eastern Black Swallowtail
<input type="checkbox"/> celery	Eastern Black Swallowtail
<input type="checkbox"/> cherries	Red-Spotted Admiral
<input type="checkbox"/> citrus (oranges/lemons/limes)	Giant Swallowtail
<input type="checkbox"/> corn	Gray Hairstreak
<input type="checkbox"/> cranberry	Bog Copper
<input type="checkbox"/> currant	Comma
<input type="checkbox"/> dill	Eastern Black Swallowtail
<input type="checkbox"/> fennel	Eastern Black Swallowtail
<input type="checkbox"/> hops	Question Mark
<input type="checkbox"/> maple	Harvester
<input type="checkbox"/> mustard	Falcate Orange Tip
<input type="checkbox"/> nasturtium	Cabbage White
<input type="checkbox"/> nettles	Red Admiral
<input type="checkbox"/> oats	Common Wood Nymph
<input type="checkbox"/> parsley	Eastern Black Swallowtail
<input type="checkbox"/> passionfruit	Variiegated Fritillary
<input type="checkbox"/> peas	Eastern Tailed Blue
<input type="checkbox"/> sassafras	Spicebush Swallowtail
<input type="checkbox"/> soybeans	Silver-Spotted Skipper
<input type="checkbox"/> sunflowers	Silvery Checkerspot
<input type="checkbox"/> violets	Great Spangled Fritillary

When you see eggs, caterpillars, and chewed leaves in your garden, that means those plants are being used as host plants by moths or butterflies. Watch them grow and see what beauty they will become.



On the next pages you will see several host plants along with the eggs, larvae, and pupa stages of the moths or butterflies who use them.



Mourning Cloak (*Nymphalis antiopa*)

Host Plant: Birch



Imperial Moth (*Eacles imperialis*)

Host Plant: Maple



Spring Azure (*Celastrina ladon*)

Host Plant: Highbush Blueberry



Common Wood Nymph (*Cercyonis pegala*)

Host Plant: Oats



Gray Hairstreak (*Strymon melinus*)
Host Plant: Corn



Bog Copper (*Lycaena epixanthe*)
Host Plant: Cranberry

Now Let's Get Outside!

Use the host plant and pollinated plant lists to help you decide what to serve. You'll need a drink or two, a special sandwich or cooked main dish, a tasty snack to go with it, and DON'T forget a yummy desert!



When you have your meal together, pack it up and take it outside to the garden or park. Enjoy your Host Plant & Pollinator Picnic right where it all began.

